

Information Pack



Contents

- Key info
- Good to know
- Instructions (such as 'how to use the heating')
- About the cottage and the surrounding area
- List of other activities in Pembrokeshire
- Routes to the main nearby beaches
- Nearby walks
- Recycling and rubbish collection information

Farthings Hook Mill Country Cottage

Key info

Contact Details: In case of any issues, during your stay please contact Juliet on 07912 887 594

Emergency Contacts

The emergency number for police/ambulance/fire brigade in the UK is **999** Non-emergency numbers: police is **101**, NHS Direct Wales is **0845 46 47**. The nearest general hospital (with A&E) is the Withybush General Hospital near Haverfordwest, 01437 764545, SA61 2PZ

Internet / WiFi - the cottage includes unlimited Wi-Fi throughout. Please note, the wifi signal can be affected by adverse weather conditions. **ID:** FarthingsHookMill **Password:** fhm-wifi. If you need to restart the router, there is a switch on the upstairs landing, by the bottom left side of the bathroom door.

Parking - Please park your car on the gravel track. There is a turning area at the end. The area at the top of the driveway is occasionally used by large logging vehicles, so we ask that you only leave cars there temporary.

Cottage Keys - There are two keys; each one opens both the front and the back door. Please leave one of the keys in the key box situated outside the side door when you depart and the second key in the tin on the mantelpiece by the dining table. The front door is the main exit in the case of fire.

Windows - each window can be unlocked using the key by each one. All window keys are the same. Please note that the bottom window panes can be raised, so you may want to consider keeping the windows closed in the areas where small children may be. In the event of a fire the windows are a means of escape so do please keep a key nearby each window.

Rubbish / Recycling – Please separate the recycling and non-recyclable using the bags provided which will be labelled accordingly. Pembrokeshire council are very strict about this so it would be great if you can make sure that recycling isn't included in the black bags. Bin bags can be stored in the bins located in the shelter behind the cottage.

Heating is normally left on and can be adjusted by using the room controls downstairs and the landing controls upstairs. To adjust downstairs room, press on the top left corner of control panel to increase desired temperature, or lower left corner to reduce temperature. Upstairs is on a daily timer; to temporarily reduce or increase the temperature use the up and down buttons. It is also possible to reduce the temperature in each room individually by turning down the radiator thermostat, but if you do that please return the settings to medium when you leave the cottage at the end of your stay. (More details provide later in the guide).

Hot and Cold Water - The system will automatically ensure there is always hot water.

There are two **fire alarms** situated downstairs and upstairs. If you need to silence the alarm, just press and hold the middle button

There are two doors, front and side. Note that in order to lock the doors, you need to pull the handle upwards. Neither door locks automatically upon closing.

Farthings Hook Mill Country Cottage

About the cottage – good to know

Throughout the cottage we have tried to keep things as easy to use as possible and have created this guide to provide all the information you need during your stay.

The cottage includes:

HD Freeview TV - All standard free channels are included. The HD channel numbers are 101-105. There is also a DVD player in the cupboard under the Television, with a varied selection of DVDs.

Board games - there's a wide range of games including Monopoly, a wooden chess set, Pictionary and three different versions of Trivial Pursuit.

Kitchen includes modern oven, electric hob, dishwasher, microwave, toaster and all the cutlery, plates/dishes and utensils you would expect to find in a normal home. Instructions for toaster, microwave, washing machine and dishwasher can be found in the kitchen drawer on the right.

The **microwave** has a lot of functions so you may want to refer to the instructions but if you just want standard microwaving, press the button on the bottom right repeatedly until you have the desired cooking time.

Coffee Machine – there is a Tassimo Coffee machine available. This requires Tassimo discs to use which are available at supermarkets but unlikely to be available in local shops. Instructions can be found in the kitchen drawer on the far right

The **washing machine** is simple to use. After selecting the required wash, it will show the time on the display. Note that once it's finished its cycle, you need to wait for the door lock light to turn off before you can open the door. Please use the detergent provided.

The **dishwasher** is also easy to operate. Just press the button on the top of the door until you have the desired operation. There will be some detergent and dishwasher tablets situated under the sink upon your arrival.

Snug - this room situated on the ground floor can be used either as a bedroom or an alternative room to read or play games in. It contains a comfy day bed, games and books. The bed can be extended to a double by pulling the lower section away from the main bed.

If not already set up, **under the stairs** you can find the travel cot, highchair, and stair gates. If dogs are staying please ensure the stair gate is closed as the dog(s) must stay downstairs.

We wouldn't recommend leaving windows wide open at night just in case any birds come in and disturb your sleep.

Septic Tank - As we are in a Site of Special Scientific Interest we have installed an environmentally friendly waste water treatment system; as such it is critical that **no nappies, sanitary towels, kitchen paper or baby wipes** are flushed into the system. Also to maintain the right bacteria levels in the system we have provided septic tank friendly cleaning products; please avoid using anti-bacterial products as much as possible.

Online shopping - Tesco are able to deliver to the cottage so this may be an easy way of getting all the groceries in for your stay.

Power Cut - In the unlikely event of a power cut, there is an emergency light/torch situated in the upstairs landing that can be used. If the torch is turned on and in its charging position it works as a night light and will automatically light up on loss of power. There are also candles that can be found in the kitchen drawer closest to the dining area. Please note, the candles are only to be used during a power cut.

Farthings Hook Mill Country Cottage

Heating, Water and Wastewater

Heating

The heating system utilises underfloor heating downstairs and eco radiators upstairs. The heating is normally on and can be easily adjusted using the thermostats situated around the house

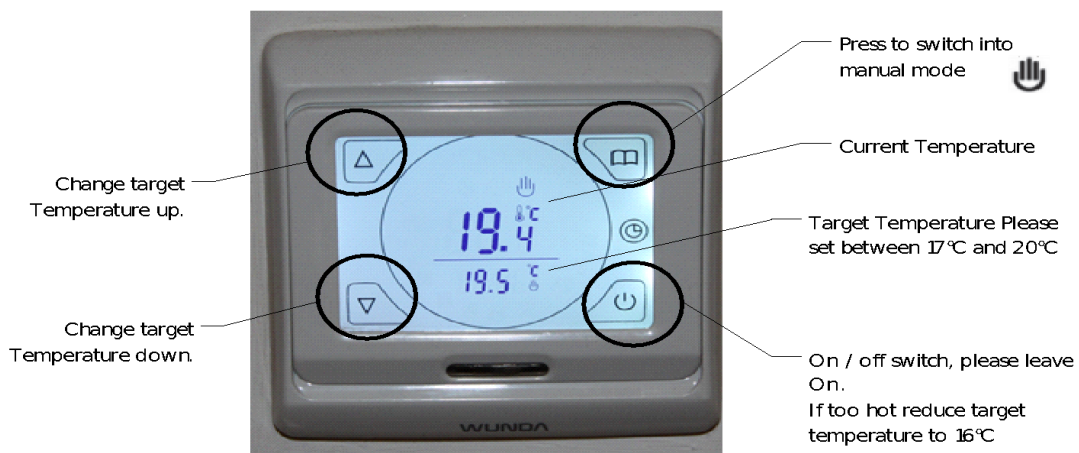
In the unlikely event that hot water or heating is not working, check the control panel under the stairs. (key code for lock = 1504)

- There should be a green light. To change press the long orange button to power on/off

- There should be a black square next to both "Heat" and "Tank". To change press the "Mode" button, under the control panel cover to cycle through the options.

Downstairs

The rooms each have their own thermostat to allow each zone to be controlled separately.

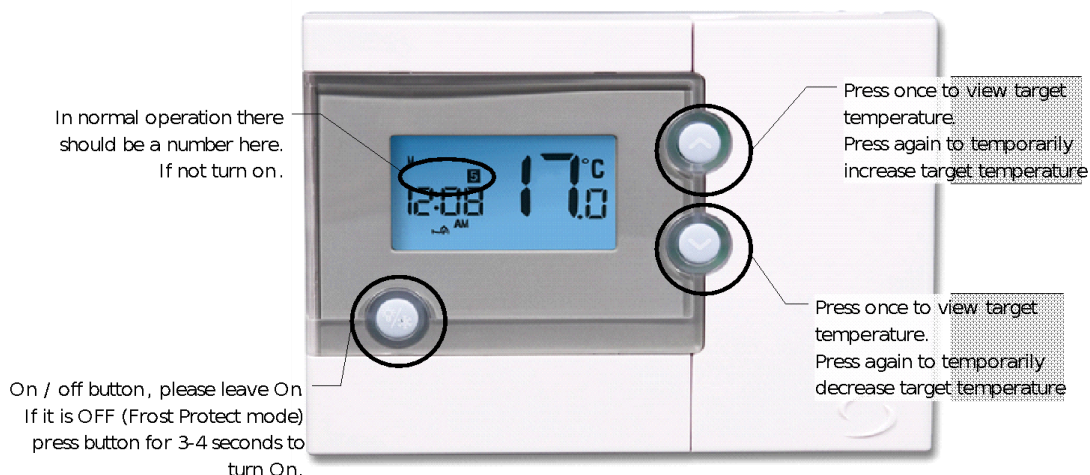


The thermostat is touchscreen and can be activated by touching one of the corners.

- The top right corner switches between manual mode (hand icon) and clock control mode (clock icon); please always leave in manual mode with the hand icon symbol displayed.
- The bottom right corner switches the zone heating on and off, please always leave on. If the temperature is to high please reduce the target temperature to 16°C
- Bottom left and top left corners change the target temperature up (top left) and down (bottom left).
- The target temperature is in the smaller font displayed towards the bottom of the screen. (Actual temperature is at the top). This should be set between 17°C and 19°C depending on preference

Upstairs heating

Upstairs temperature is controlled by the timer thermostat in the landing, and is set to come on at fixed times during the day.



Farthings Hook Mill Country Cottage

To temporarily reduce or increase the temperature, use the up and down buttons.

Upstairs heating continued...

It is also possible to reduce the temperature in each room (bedrooms and bathroom) individually by turning down the radiator thermostat, but if you do that please return the settings to maximum when you leave the cottage at the end of your stay. Please note that the eco-radiators used have fans to blow the heat down making them more efficient. It is possible to turn the fans off at the wall switch, but this will make the radiator very ineffective and recommend you keep the switch on and use the radiator thermostat instead.

Wastewater system / Septic Tank

As we are in a Site of Special Scientific Interest we have installed an environmentally friendly waste water treatment system.

As such it is **critical that no nappies, sanitary towels, kitchen paper or baby wipes are flushed into the system.**

Also to maintain the right bacteria levels in the system we have provided septic tank friendly cleaning products, if you need to replace these products please use septic friendly products if possible.

To further help the system perform correctly please also **minimise the amount of fats, oil, grease, milk, alcohol, disinfectants, sterilisation fluid, anti-bacterial and anti-biotic medicine** that might find its way into the system.

Farthings Hook Mill Country Cottage

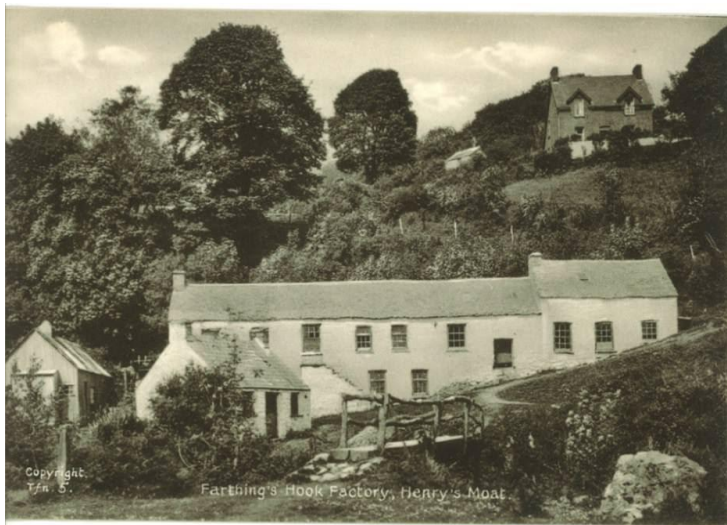
Guide to Farthings Hook Mill and the surrounding area

About the cottage

Between the early 17th and the mid-20th century, Farthings Hook has been used as a mill. The cottage itself was used by workers as an area for sleeping and eating whilst there were various buildings situated by the river used to operate the mill.

During the 17th century, Farthings Hook was used as a Fulling Mill (for cleaning dirt and oils off wool and cotton). It was then converted into a woollen mill in 1847 and worked until 1943. Since then the house has been used as a holiday cottage and has been visited by various family and friends until renovation began in 2013.

The postcard from the 1932 century (shown below) shows the cottage in the top right corner and the old mill when it was in operation.



About the general area

Pembrokeshire is one of the most beautiful areas of the UK. The county is home to Pembrokeshire Coast National Park, the only coastal national park of its kind in the United Kingdom and one of three national parks in Wales.

Pembrokeshire is a maritime county, bordered by the sea on three sides, by Ceredigion to the north east and by Carmarthenshire to the east.

Over the years Pembrokeshire's beaches have been awarded 41 Blue Flag Awards and 106 Seaside Awards. In 2011 it also had 39 beaches recommended by the Marine Conservation Society.

The cottage itself is near a few farms and the towns of Maenclochog and Tufton. The most notable nearby tourist attraction being Llys-y-Fran Reservoir & Country Park only a 10 minute walk away from the cottage – see below.

Farthings Hook Mill Country Cottage

Villages and towns near the cottage

Maenclochog (2.9 miles via road)

This is the nearest town where you can buy basic provisions. There are two small food shops (Sarah's has the wider selection), two petrol stations (the Murco garage also has a small shop attached) and there is a playground for children. Maenclochog, also has recycling bins located by the public toilets.

Maenclochog Petrol Station opening times:

Mon to Sat: 8am - 10pm

Sunday: 10am - 7pm

Llys y Fran Reservoir & Country Park (2.8 miles to main entrance via road)

Llys Y Fran is a 350 acre country park containing a reservoir where you're able to fish and is home to the 100ft high dam which sends water crashing down into the River Syfynwy. The park is 'a haven of peace and tranquillity with an abundance of wildlife both on and off the water'. There is a 7 mile cycle route as well as the opportunity to hire boats.

It takes 5 minutes to walk from the cottage to the edge of the country park. There you'll find a path that leads you along the reservoir ending up at the main area with the dam itself, a restaurant/Café, a shop, playground and toilet facilities. You will find more a detailed description of the walking opportunities in the 'nearby walks' section of the pack.

Tufton (1.4 miles)

Tufton is a small village about a 30 minute walk from the cottage. It is home to a few farms and the Tufton Arms pub, a friendly local.

Preselis (3.0 miles)

Dotted with prehistoric remains, the Preselis are a range of hills that rise 528 metres above the Irish Sea and feature wonderful 360 degree views of the sea and surrounding area. There are more prehistoric monuments per square mile in the Preselis than anywhere else in Wales outside Anglesey.

Rosebush (4.2 miles via road)

Rosebush is a small village in between Maenclochog and the Preseli Hills.

It has a pub called Tafarn Sinc, in the grounds of the former railway station. There is also a restaurant that includes menu items for those with special diets, called The Old Post Office. Originally it was the house of the owner of the smaller part of the old Rosebush slate quarry. From there a walk can be started to the highest point in the hills.

Rosebush also has a cheese manufacturer called Pant Mawr Cheeses; they have a cheese shop and run the post office on the farm.

Clarbeston Road (5.4 miles)

This is the nearest village with a station with trains that run on the Line between Milford Haven, Haverfordwest, Carmarthen and Swansea. There is a nice pub in the village called 'The Cross Hands' that serves food at most times and shows Sky Sports. There's also a great place in Clarbeston Road to buy tractors and other farm machinery just in case that's what you're after.

Newport, Pembrokeshire (10 miles)

This is a popular tourist destination with an ancient port, many pubs, restaurants, shops and a great sandy beach. The old port area hosts many beach, water and other fun activities. If you're a reasonably experienced cyclist, the route from the cottage to Newport across the Preseli Hills is well worth doing with all its fabulous views of the surrounding countryside and Pembrokeshire coast.

Haverfordwest (11 miles) is the largest town in Pembrokeshire. It has two large supermarkets, many shops, pubs, restaurants, a swimming pool and the almost 900 year old Haverfordwest Castle.

Farthings Hook Mill Country Cottage

Activities in the area, only a short drive away

[Oakwood](#) - Family-friendly attraction with kids' rides, mini-golf, a Neverland area plus roller coasters

[Folly Farm Adventure Park and Zoo](#) Lively adventure park with exotic and farmyard animals, games, fair rides and adventure playgrounds.

[Heatherton Activity Park Ltd](#) - Family Leisure Park whose activities include paintball, karting, golf and archery.

[Bowlings Riding Centre](#) - 01437 741407 - Horse riding centre near Haverfordwest in 350 acres of wooded farmland. The horses vary from quiet family ponies suitable for beginners to competition horses for the advanced riders

[Glyn Bach Gardens](#) - Beautiful local garden that houses a National Collection of Monardas. Entry by appointment only.

Links to information about castles in Pembrokeshire

[Visit Pembrokeshire Castle page](#) - visitpembrokeshire.com

[Pembroke Castle](#) - pembroke-castle.co.uk

[Castles in Pembrokeshire Wikipedia page](#)

Places to eat

Pub/restaurants relatively nearby

- The Wolfe Inn www.thewolfeinn.co.uk 01437 741668 in Wolfscastle SA62 5LS. Around 18 minutes' drive west of the cottage along narrow lanes serves good pub grub.
- The Pump on the Green www.thepumponthegreen.co.uk 01437 741 881 in Spittal, SA62 5QT. Around 15 Minutes' drive towards Haverfordwest, again had a lovely meal there recently.
- Tafarn Sinc www.tafarnsinc.co.uk 01437 532214 in Rosebush, SA66 7QU. Can be walked to or from the cottage in around 1 hour 30 minutes, each way see walks below, would recommend making a reservation.

Other recommendations:

- The Old Sailor at Dinas Head 01348 811491, is a really good spot as it is next to a small beach with plenty of rock pools, there is a nice coastal loop walk (1 hour 30min) around dinas head and the food is mostly really good. The car ark is free but gets full fairly early, "creative" parking needed if you arrive later. [Link](#)
- Picton Castle is more gardens and gallery then castle, nice play area and a good café pictoncastle.co.uk (entry is £6.60 per adult) 01437 751326.
- The west coast of Pembrokeshire has a great mix of beaches and pubs Little Haven, Nolton Haven are both worth a look, as well as Broad Haven and Newgale.

Also worth a mention are; Whitesand/Saint David's Head, Tenby and Bosherton Lilly Ponds/Beach/St Govan's Inn.

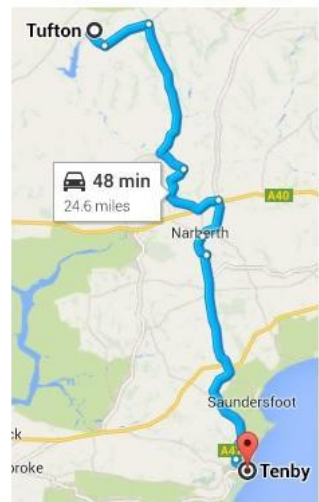
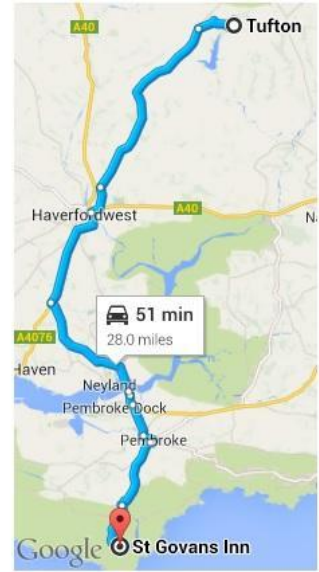
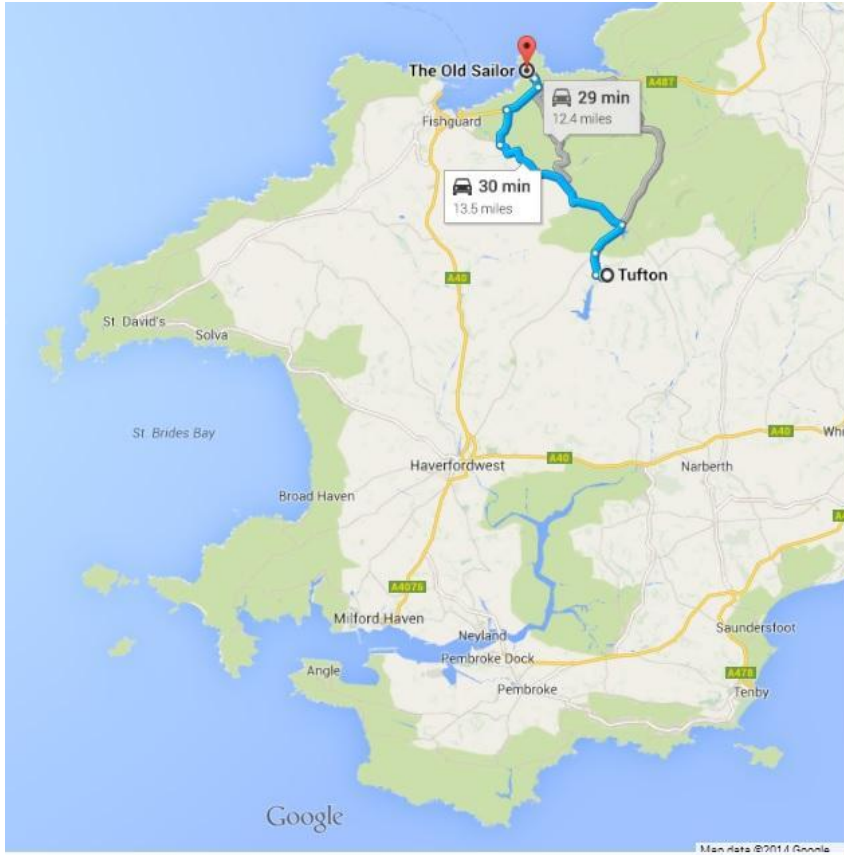
Farthings Hook Mill Country Cottage

Here is rough map of Pembrokeshire showing the main activities in the area



Farthings Hook Mill Country Cottage

Routes to the main nearby beaches



Farthings Hook Mill Country Cottage

Nearby walks from Farthings Hook Mill

Pembrokeshire is well known for its spectacular coast path, but there are walks you can take from the house, without you having to use a car. You need Ordnance Survey maps for the non coast path walks, or no doubt a GPS system.

The **Llysyfran Reservoir** is easily accessible from the house. Starting from the top of the drive, walk down the shared road. At the bottom of the road, directly opposite, there is a pedestrian gate; go through and follow the path. After you have crossed a stile you will get to the main track which runs around the reservoir. This part of the walk takes about 15 minutes from the house. On the east side, (turn left when you get to the track) it takes about 35 minutes to get to a visitor centre – which has food and drink and public toilets. On the west side (turn right when you get to the track) it is about two and a half hours; so to walk the whole way round the reservoir is quite long, but well worth the effort. Fishing permits and boat and bike hire is available at the visitor centre (map reference SN040243).

The other walk is to **Rosebush**. You go up the drive from the house and turn a sharp left on a track that passes above the house. The path starts through land which is used for forestry activities. Look out for the yellow signs which have been put up by Pembrokeshire County Council. As the track goes downhill, take the left fork. After about ten minutes and after a very boggy bit of the path, you come to a concrete footbridge. You have to climb over stiles both to get on and to get off the bridge. After you have crossed the Afon Syfnwy follow the direction of the yellow arrow sign up a hill. You come to a double stile, and you will then see the farm buildings of Bernards Well Farm. The right of way goes along the farm track, and comes out on the Tufton to Maenclochog Road. Turn right and walk along this for a short distance. You will see (at map reference SN055283) a wooden walkers sign to the left. Take this path that goes north eastwards following a track for part of the way, then down to the Afon Syfnwy. Look out for the stile on your left as you near the bottom of the valley. You need to climb over. Continue down and turn right on the track and a quick left at the yellow sign. Cross the Afon Syfnwy again, this time you cross by stepping stones.

Continue to follow the yellow or wooden walker signs through a hamlet and across fields, one of which has a large stone in the middle. You will eventually come out on to the B4313 road at SN073291, on the outskirts of the village of Rosebush. Turn left at this junction to enter the town. Rosebush has a pub, the Tafarn Sinc at SN075295. This walk takes about one and a half hours (one way!) but please note the path is not suitable for pushchairs.

Farthings Hook Mill Map reference SN049273 GPS coordinates N 51o54'30" W004o15'6"

Directions

The easiest way to the cottage is via the B4329 road that runs between Haverfordwest (the largest town in Pembrokeshire) and Carmarthen. At Tufton turn right off the B4329 heading South-East (with the Tufton Arms on your left), at the T junction turn right, then turn left at the next junction (you may be able to see the cottage on your left on the other side of the valley). The turning for the cottage is the next left shortly after a small (narrow) bridge and before a steep hill. The lane will twist then go up a hill, at the top of the hill turn left while the main track/road heads right. Take the left fork down to the cottage.